

Getting Started with Pulseway Remote Desktop

Index

1. [About Pulseway Remote Desktop](#)
 2. [Enabling Remote Desktop on your systems](#)
 3. [Downloading the Remote Desktop Client](#)
 - 3.1. [Getting started with Remote Desktop Client](#)
 4. [Downloading the Pulseway Dashboard](#)
 - 4.1. [Getting started with Remote Desktop on Pulseway Dashboard](#)
-



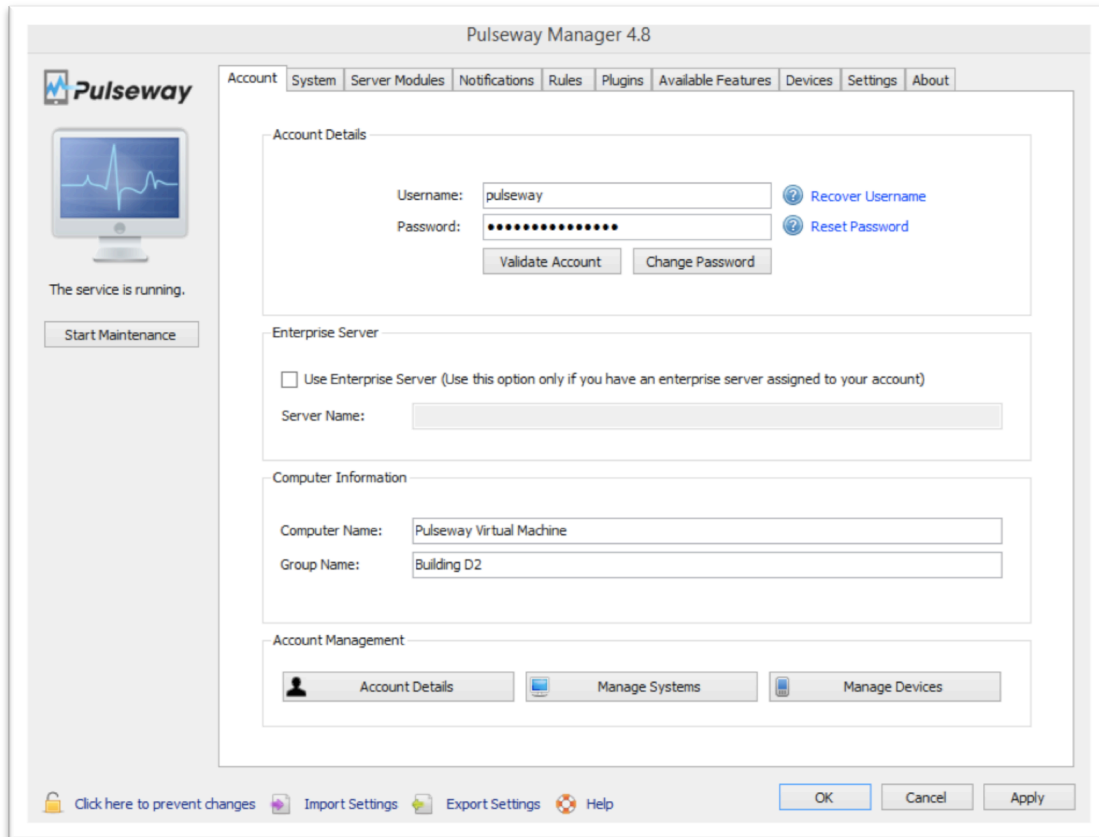
1. About Pulseway Remote Desktop

Remote Desktop enables you to connect to all your monitored Windows systems and control any remote or console session.

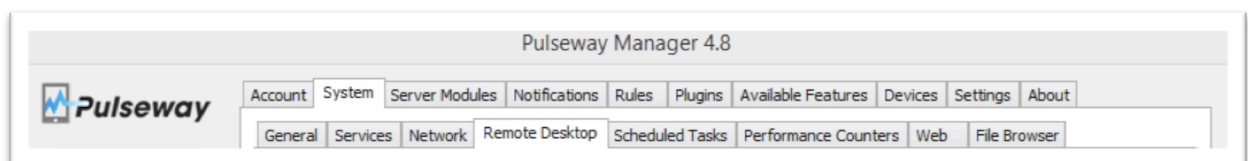
Connecting to the console session will allow you to take control of the computer as if you were sitting in front of it. On the other hand, if you connect to a Remote Desktop session you can assist users that are making use of the server resources through Remote Desktop (formerly known as Terminal Services).

2. Enabling Remote Desktop on your systems

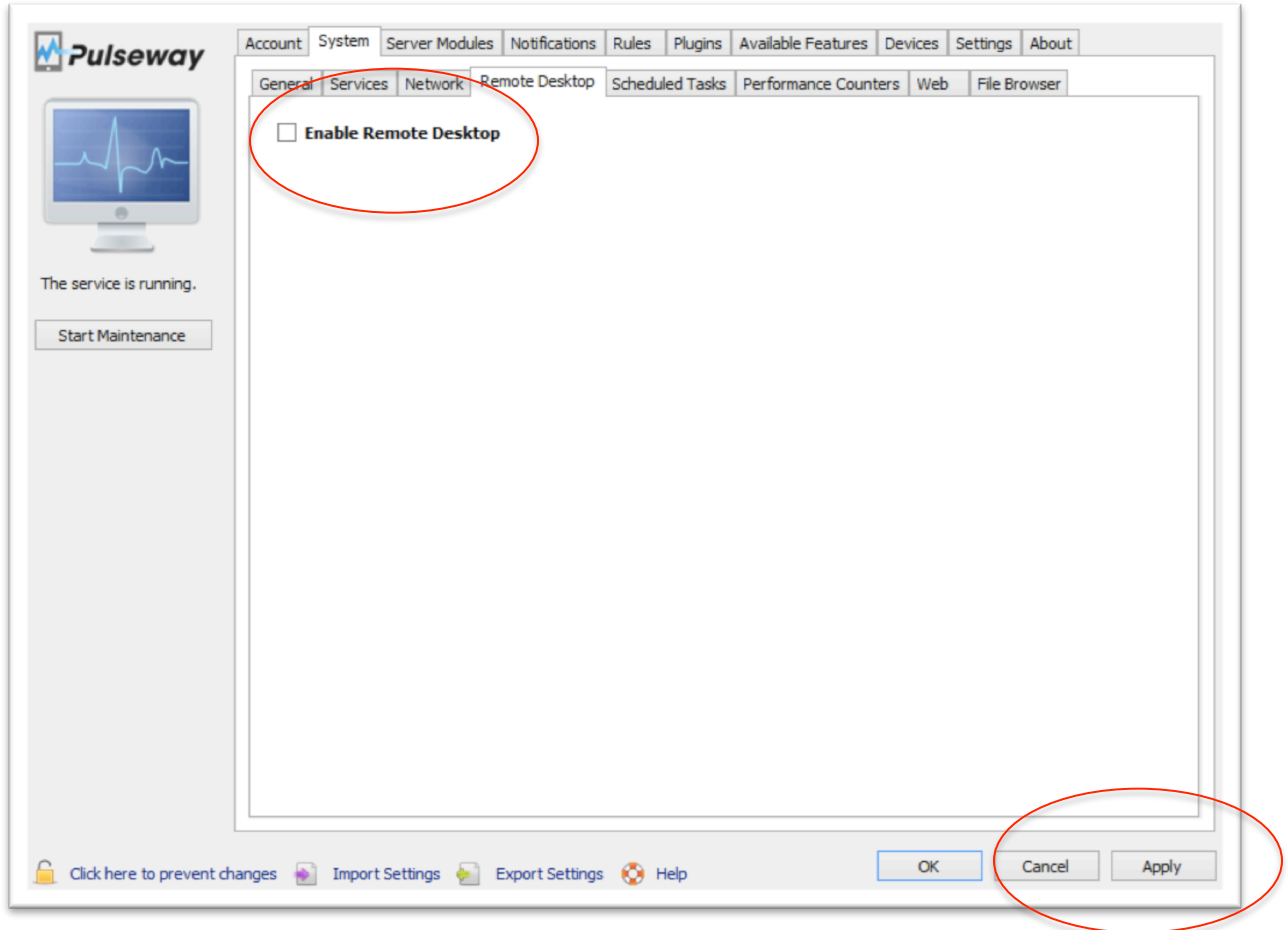
Open up the Pulseway Manager on the system you wish to enable Remote Desktop access on.



Click the "System" tab, and then click the "Remote Desktop" sub-tab.

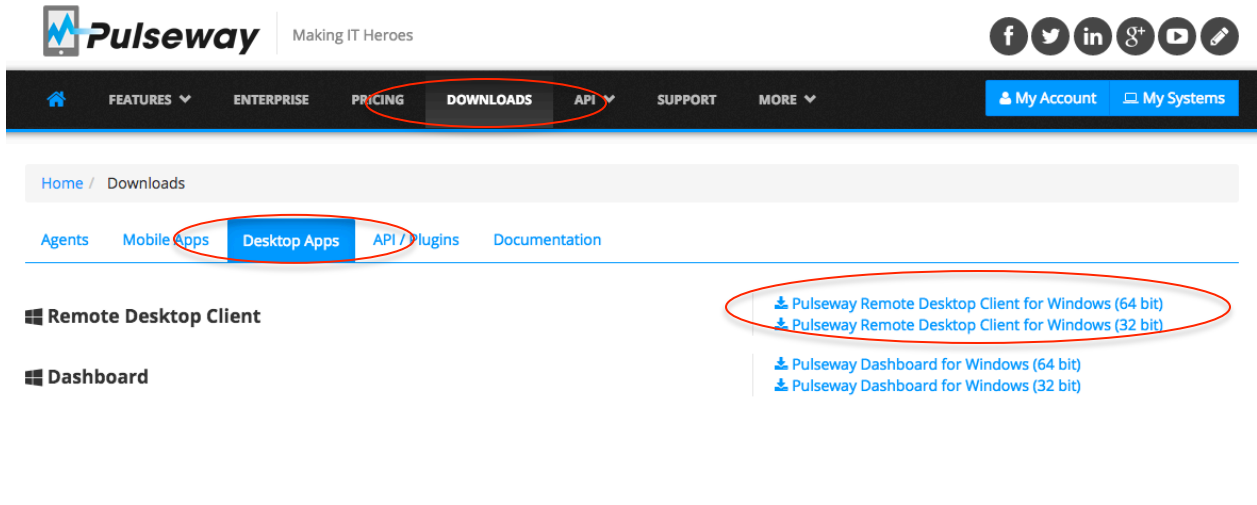


Tick the "Enable Remote Desktop" check box. And then click "Apply" button at the bottom of the agent to save the settings.



3.1 Downloading the Remote Desktop Client

Go to <https://www.pulseway.com/downloads>, click the "Desktop Apps" tab and download the appropriate "Remote Desktop Client".



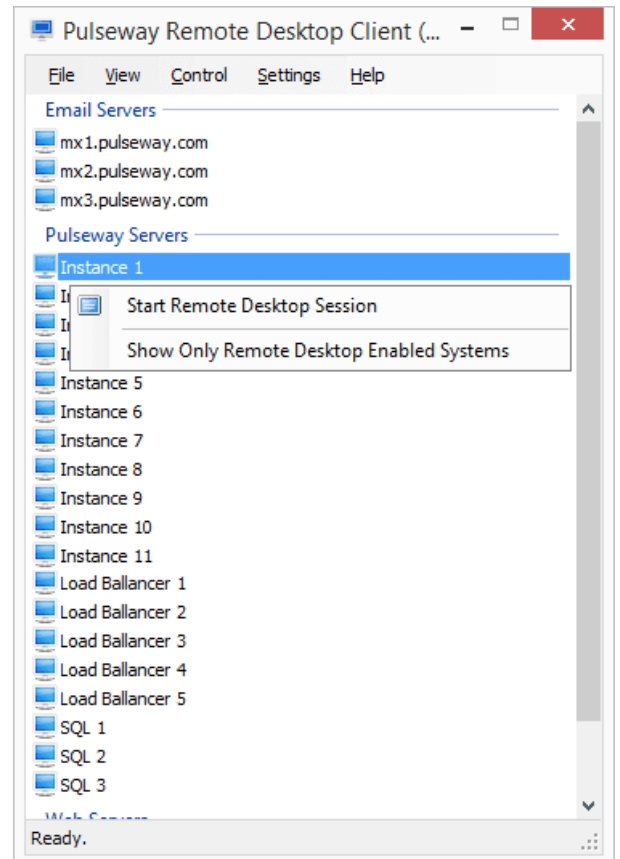
3.2 Getting started with Remote Desktop Client

Open up the Remote Desktop Client on your computer. From the Client you will be able to see all systems that have Remote Desktop enabled.

To get started with a Remote Desktop session, right-click on the system you want to connect to and click "Start Remote Desktop Session".

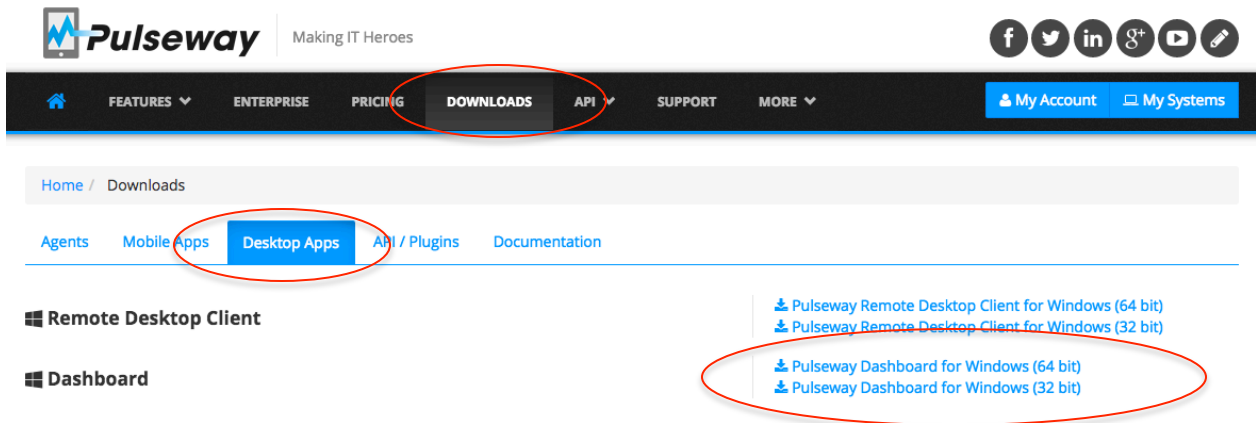
For more information, watch this video:

https://youtu.be/mV8HNDp_PrY



4.1 Downloading the Pulseway Dashboard

Go to <https://www.pulseway.com/downloads>, click the "Desktop Apps" tab and download the appropriate "Dashboard".



4.2 Getting started with Remote Desktop on Pulseway Dashboard

Open up the Pulseway Dashboard on your computer and right-click on a Remote Desktop Enabled system you wish to connect to. Click "Remote Desktop" to get started with your connection.

